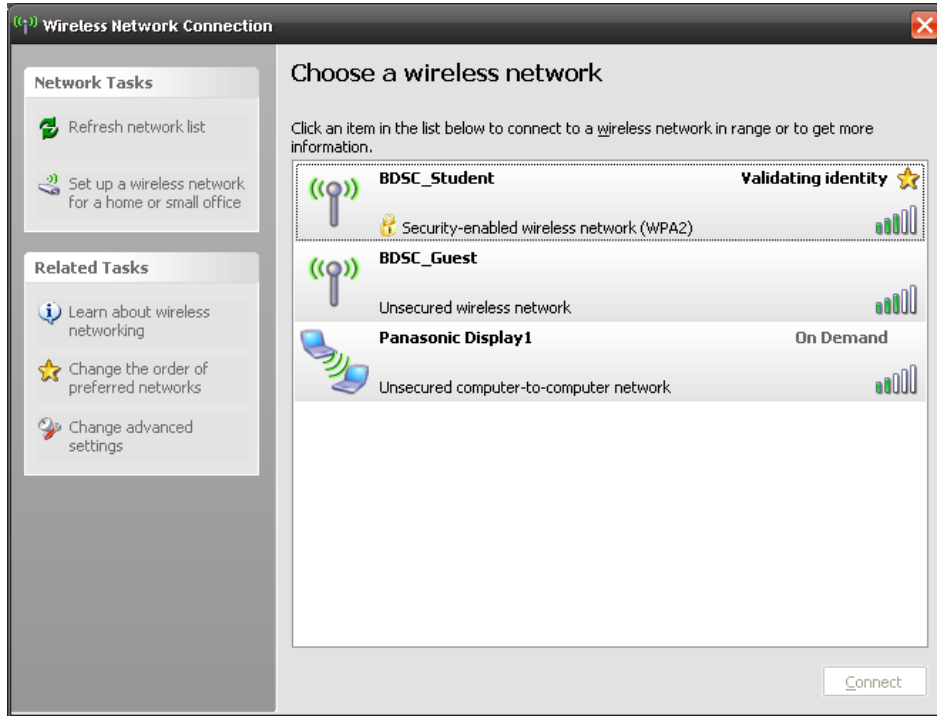
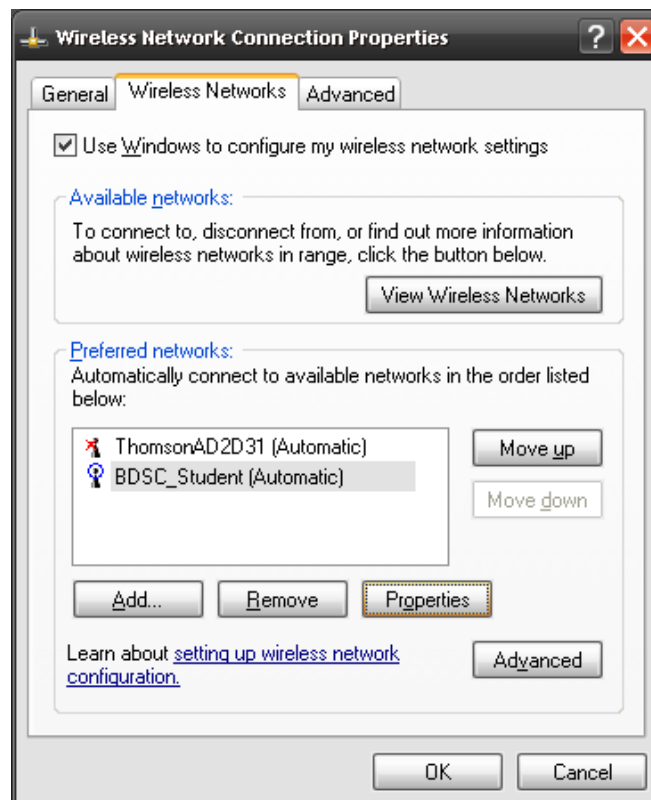


Setting up Student Wireless on Windows XP

Select **BDSC_Student** On your **Wireless Network Connections** page

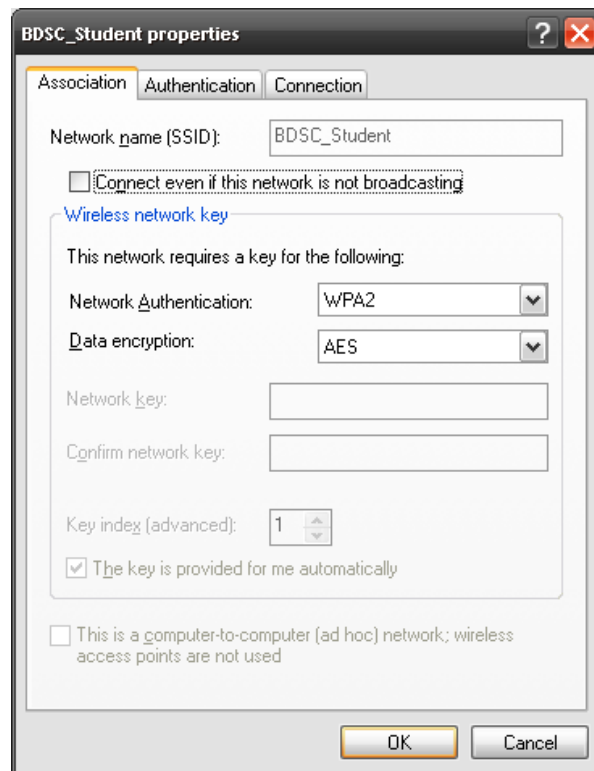


Select **Change Advance Settings**



Select **BDSC_Student** and then click Properties

Select **WPA2** from the **Network Authentication** Dropdown Box



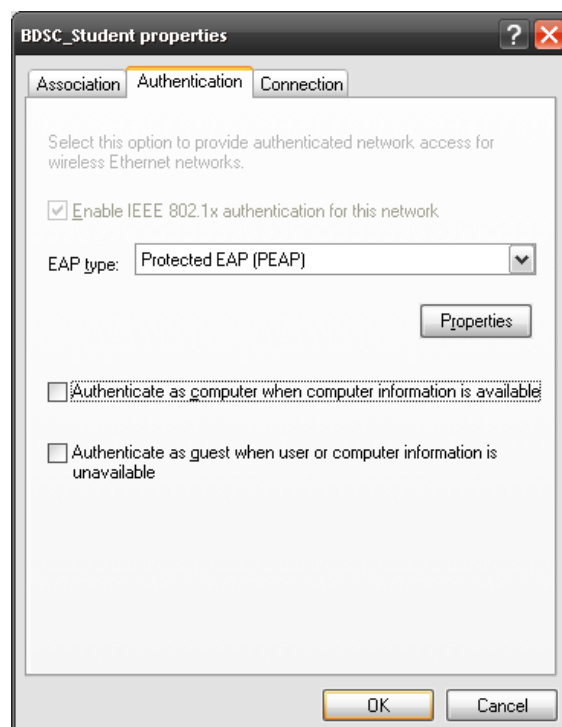
Select the **Authentication** Tab

Select **Protect EAP (PEAP)** from the **EAP Type** Dropdown Box

Un tick **Untick Authenticate as computer when computer information is available**

Un tick **Authenticate as Guest when user or computer information is unavailable**

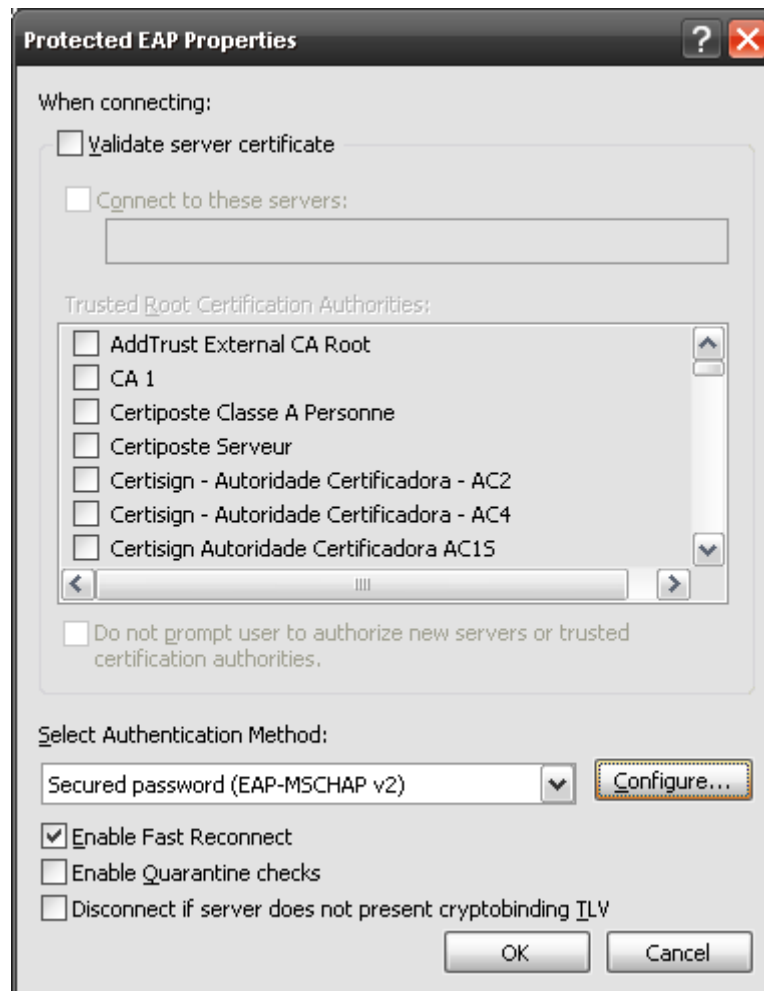
Select the **Properties** Box



Un Tick **Validate Server Certificate**

Select **Secure Password (EAP-MSCHAP v2)** from the **Select Authentication Method** Drop down box

Select the **Configure** Dialogue box



Un Tick **Automatically use my Windows logon name and password (and Domain if any).**



Click **OK** on all the dialogue boxes

Now when you try to connect to **BDSC_Student** the following box should appear

Enter in your

Username: Firstname.Lastname (School Network Username)

Password: (School network Password)

Logon Domain: **BDSC**



If you are prompted for certificate select **Allow** or **Always Allow**